



\$10,000 IN
FREE UPGRADES
& 9' Ceiling on Main Floor

\$10,000 IN
FREE UPGRADES
& 9' Ceiling on Main Floor

THE TURLINGTON

1,815 sq.ft. 3 BED 2.5 BATH

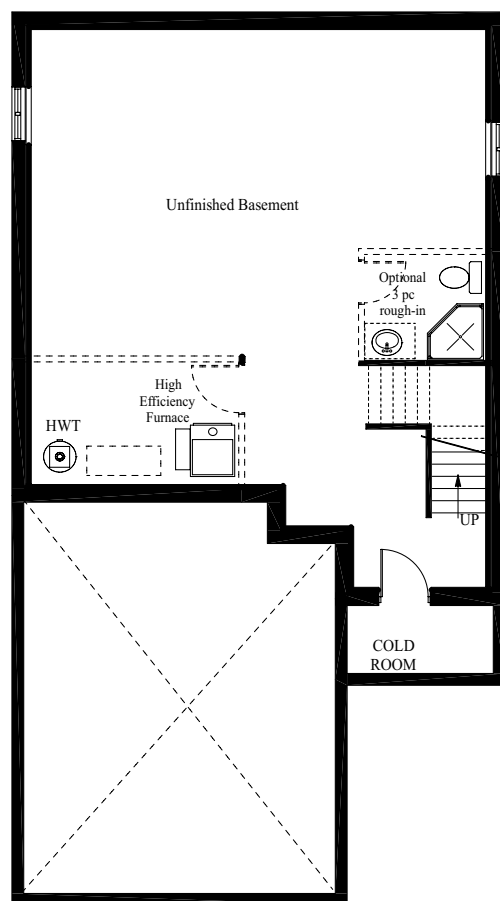
THE TURLINGTON

1,815 sq.ft. 3 BED 2.5 BATH

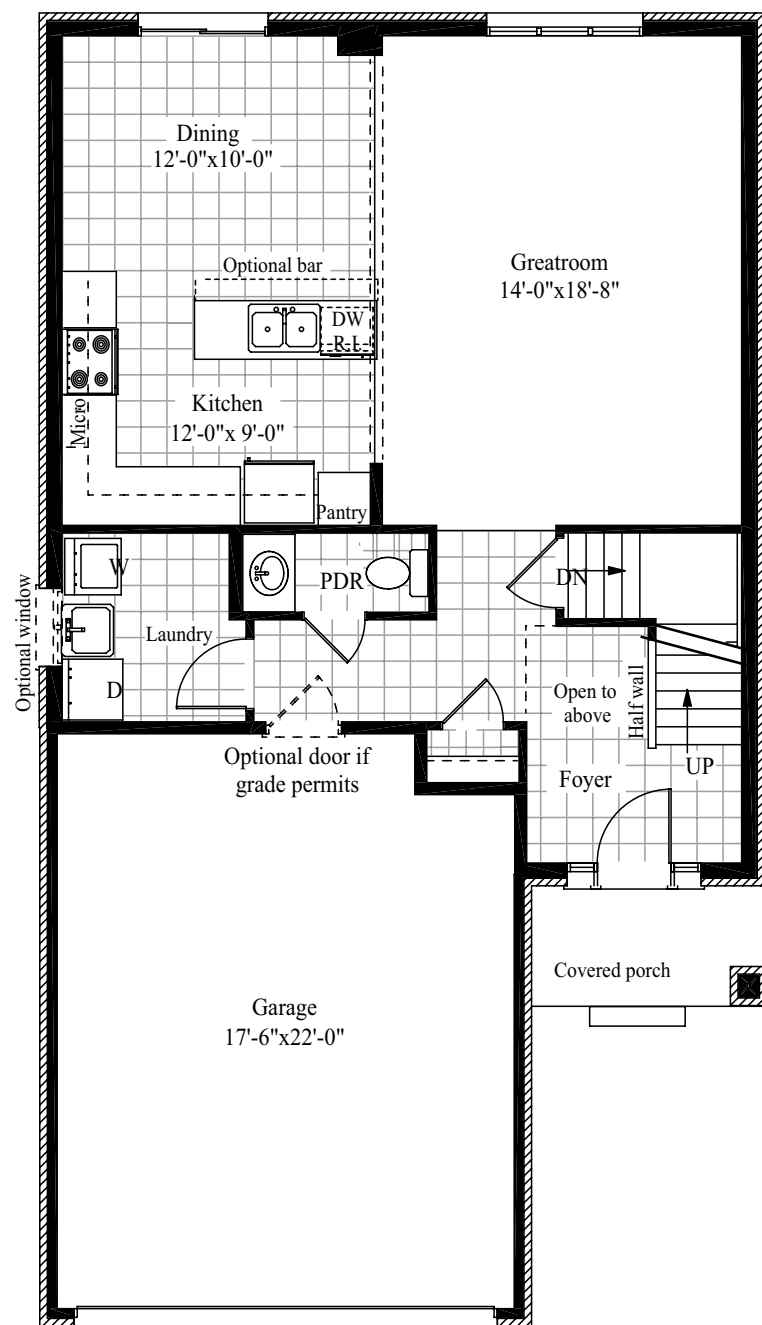


Renderings are artist concepts only and may include optional upgrades (colored windows/garage door). We reserve the right to change specifications, designs, prices and substitute materials of similar quality without notice and without occurring obligation. All information here in after is from data available at the time of printing. All measurements are approximate and may vary during construction. E.&O.E. Printed April 16, 2018 12:09 PM

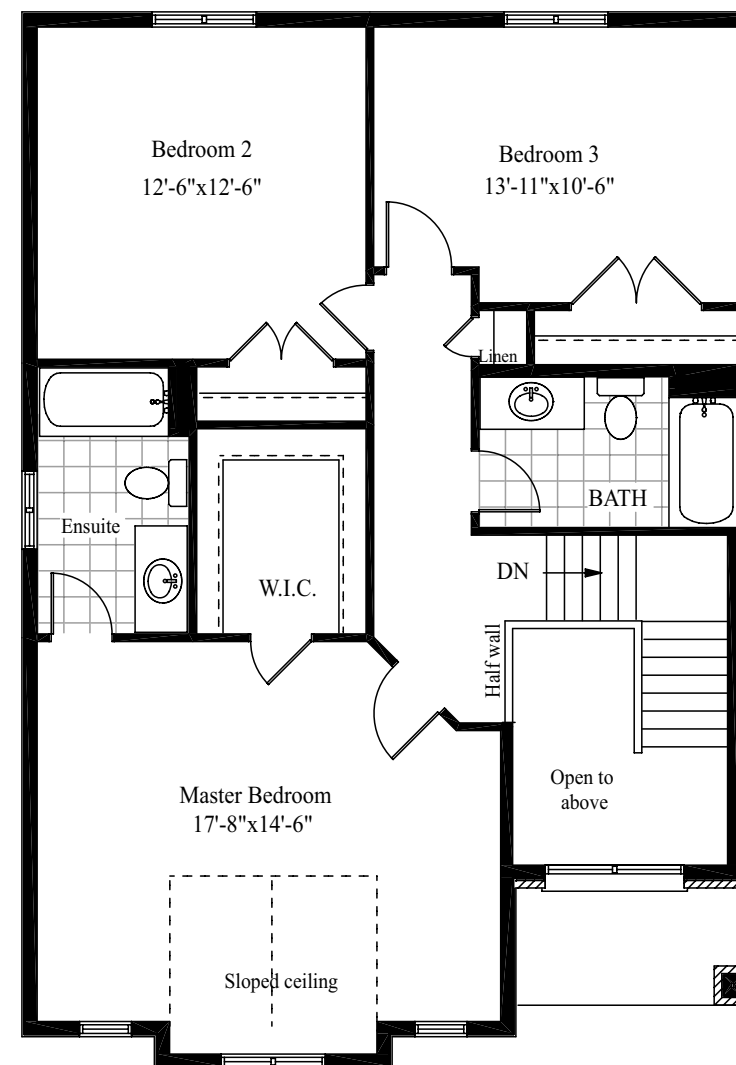
Renderings are artist concepts only and may include optional upgrades (colored windows/garage door). We reserve the right to change specifications, designs, prices and substitute materials of similar quality without notice and without occurring obligation. All information here in after is from data available at the time of printing. All measurements are approximate and may vary during construction. E.&O.E. Printed April 16, 2018 12:09 PM



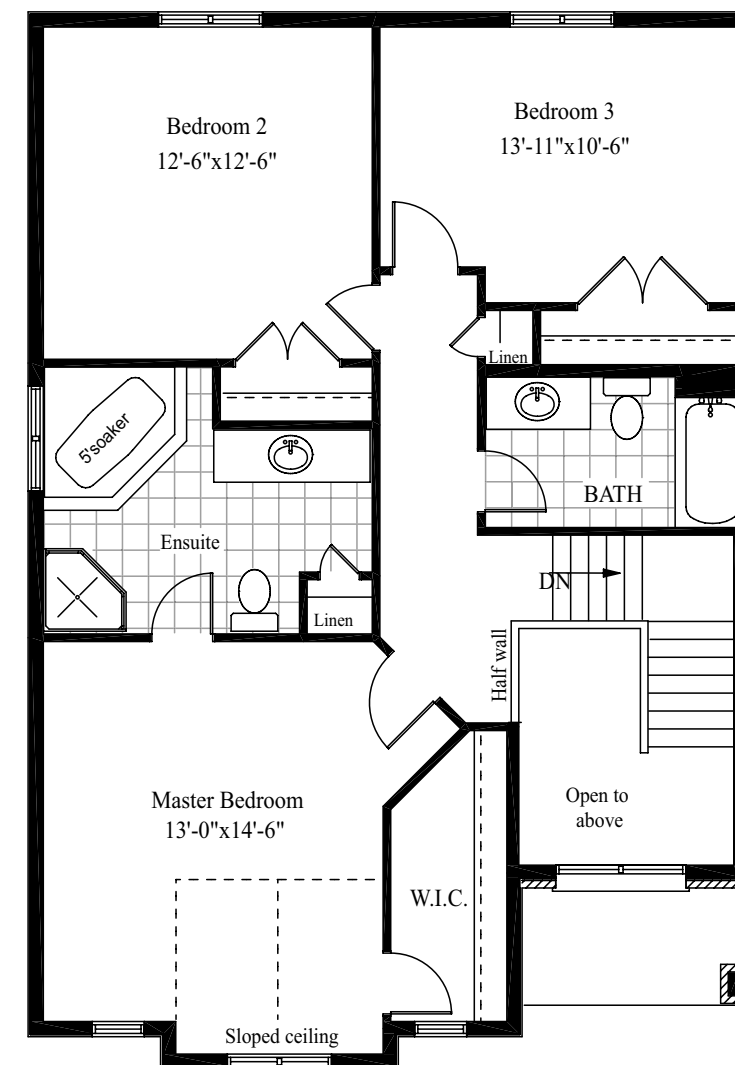
BASEMENT



MAIN FLOOR
Plan may vary slightly for Elevation B



SECOND FLOOR
Plan may vary slightly for Elevation B



SECOND FLOOR: OPT ENSUITE
Plan may vary slightly for Elevation B